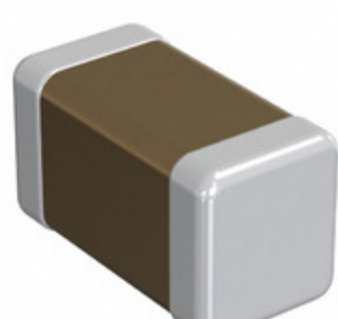


GRM0225C1E9R8CA03L



INNOVATOR IN ELECTRONICS

Part Number: [GRM0225C1E9R8CA03L](#)

Manufacturer: [Murata Electronics](#)

Description: CAP CER 9.8PF 25V C0G/NP0 01005

Data sheet: [PDF Chip Monolithic Ceramic Caps Part Numbering](#)
[PDF GRM0225C1E9R8CA03x Ref Sheet](#)
[PDF Chip Monolithic Ceramic Caps Catalog](#)

RoHS Status: Lead free / RoHS Compliant

Ship From: Hong Kong

Shipment Way: DHL/Fedex/TNT/UPS/EMS

Images are for reference only.
See Product Specifications for product details.
Buy GRM0225C1E9R8CA03L with confidence from Component-World.HK, 1 Year Warranty

[Request For Quotation](#)

PRODUCT PARAMETER

Part Number	GRM0225C1E9R8CA03L	Manufacturer	Murata Electronics
Description	CAP CER 9.8PF 25V C0G/NP0 01005	Lead Free Status / RoHS Status	Lead free / RoHS Compliant
Quantity Available	5695549 pcs	Data sheet	Chip Monolithic Ceramic Caps Part Numbering GRM0225C1E9R8CA03x Ref Sheet Chip Monolithic Ceramic Caps Catalog
Category	Capacitors	Voltage - Rated	25V
Tolerance	±0.25pF	Thickness (Max)	0.009" (0.22mm)
Temperature Coefficient	C0G, NP0	Size / Dimension	0.016" L x 0.008" W (0.40mm x 0.20mm)
Series	GRM	Ratings	-
Packaging	Tape & Reel (TR)	Package / Case	01005 (0402 Metric)
Other Names	490-13786-2	Operating Temperature	-55°C ~ 125°C
Mounting Type	Surface Mount, MLCC	Moisture Sensitivity Level (MSL)	1 (Unlimited)
Lead Style	-	Lead Spacing	-
Lead Free Status / RoHS Status	Lead free / RoHS Compliant	Height - Seated (Max)	-
Features	-	Detailed Description	9.8pF ±0.25pF 25V Ceramic Capacitor C0G, NP0 01005 (0402 Metric)
Capacitance	9.8pF	Applications	General Purpose

Component-World.com is a Reliable Stocking Distributor of Electronic Components. We specialize in all Murata Electronics series electronic components. We have 5695549 pieces of Murata Electronics GRM0225C1E9R8CA03L in stock available now. Request a quote from electronics components distributor at Component-World.com, our sales team will contact you within 24 hours.
RFQ Email: info@Components-World.com

RELATED PRODUCTS

	Part#: GRM0225C1E9R9BA03L Description: CAP CER 9.9PF 25V C0G/NP0 01005	Manufacturers: Murata Electronics	RFQ
	Part#: GRM0225C1E9R7DA03L Description: CAP CER 9.7PF 25V C0G/NP0 01005	Manufacturers: Murata Electronics	RFQ
	Part#: GRM0225C1E9R8WA03L Description: CAP CER 9.8PF 25V C0G/NP0 01005	Manufacturers: Murata Electronics	RFQ
	Part#: GRM0225C1E9R9BDAEL Description: CAP CER 9.9PF 25V C0G/NP0 01005	Manufacturers: Murata Electronics	RFQ
	Part#: GRM0225C1E9R7DDAEL Description: CAP CER 9.7PF 25V C0G/NP0 01005	Manufacturers: Murata Electronics	RFQ
	Part#: GRM0225C1E9R7BDAEL Description: CAP CER 9.7PF 25V C0G/NP0 01005	Manufacturers: Murata Electronics	RFQ
	Part#: GRM0225C1E9R8DA03L Description: CAP CER 9.8PF 25V C0G/NP0 01005	Manufacturers: Murata Electronics	RFQ
	Part#: GRM0225C1E9R8CDAEL Description: CAP CER 9.8PF 25V C0G/NP0 01005	Manufacturers: Murata Electronics	RFQ
	Part#: GRM0225C1E9R8BDAEL Description: CAP CER 9.8PF 25V C0G/NP0 01005	Manufacturers: Murata Electronics	RFQ
	Part#: GRM0225C1E9R8DDAEL Description: CAP CER 9.8PF 25V C0G/NP0 01005	Manufacturers: Murata Electronics	RFQ
	Part#: GRM0225C1E9R7WDAEL Description: CAP CER 9.7PF 25V C0G/NP0 01005	Manufacturers: Murata Electronics	RFQ
	Part#: GRM0225C1E9R7WA03L Description: CAP CER 9.7PF 25V C0G/NP0 01005	Manufacturers: Murata Electronics	RFQ
	Part#: GRM0225C1E9R8BA03L Description: CAP CER 9.8PF 25V C0G/NP0 01005	Manufacturers: Murata Electronics	RFQ
	Part#: GRM0225C1E9R9CA03L Description: CAP CER 9.9PF 25V C0G/NP0 01005	Manufacturers: Murata Electronics	RFQ
	Part#: GRM0225C1E9R7CA03L Description: CAP CER 9.7PF 25V C0G/NP0 01005	Manufacturers: Murata Electronics	RFQ
	Part#: GRM0225C1E9R7BA03L Description: CAP CER 9.7PF 25V C0G/NP0 01005	Manufacturers: Murata Electronics	RFQ
	Part#: GRM0225C1E9R9CDAEL Description: CAP CER 9.9PF 25V C0G/NP0 01005	Manufacturers: Murata Electronics	RFQ
	Part#: GRM0225C1E9R9DA03L Description: CAP CER 9.9PF 25V C0G/NP0 01005	Manufacturers: Murata Electronics	RFQ
	Part#: GRM0225C1E9R8WDAEL Description: CAP CER 9.8PF 25V C0G/NP0 01005	Manufacturers: Murata Electronics	RFQ
	Part#: GRM0225C1E9R7CDAEL Description: CAP CER 9.7PF 25V C0G/NP0 01005	Manufacturers: Murata Electronics	RFQ

Related keywords for GRM0225C1E9R8CA03L

Murata Electronics GRM0225C1E9R8CA03L	GRM0225C1E9R8CA03L distributor	GRM0225C1E9R8CA03L supplier	GRM0225C1E9R8CA03L price
GRM0225C1E9R8CA03L download datasheet	GRM0225C1E9R8CA03L datasheet	GRM0225C1E9R8CA03L stock	buy GRM0225C1E9R8CA03L
Murata Electronics GRM0225C1E9R8CA03L	MURATA GRM0225C1E9R8CA03L	Murata Electronics North America	TOKO / Murata GRM0225C1E9R8CA03L
		GRM0225C1E9R8CA03L	